



PRODUCTS

# The New Normal



**THE PEOPLE  
OF AFRICA  
DESERVE  
BETTER**



**MORE THAN 75 000 LITRES OF  
DRINKING WATER SAVED  
PER HOUSEHOLD  
EVERY YEAR!**



**A PROUDLY BLACK OWNED ENTERPRISE  
LEVEL 2 BBBEE**

## VISION

To be a world class manufacturer, supplier and distributor of quality, environmentally friendly, sustainable, affordable and water efficient sanitation products.



## MISSION

To manufacture top quality and cost effective products which enable us to service South Africa, as well as the rest of the world, and provide the best solutions to our clients. To ensure maximum community benefit, not only for users of our products, but also as a direct result from capacity building, training programmes, community participation and community awareness.



Envirosan's core business is to provide a comprehensive range of polymer precision moulded water and sanitation systems and solutions, specialising in sustainable sanitation products.

Quality and reliability are of paramount importance to our customers and ourselves.







**AGREEMENT**  
**SOUTH AFRICA**  
innovative construction product assessment

## QUALITY

Our products are manufactured using only environmentally friendly and quality approved raw materials which carry our quality guarantee.

We strive to deliver Safe, Dignified, Affordable and Sustainable Sanitation to All.



EnviroSan is committed to building mutually beneficial relationships with our customers by providing cost effective products, technical excellence, superior quality and unrivaled levels of service, thereby empowering us to not only meet, but also exceed their expectations.

*Brian*

Brian Lewis  
CEO

**EnviroSan**  
SANITATION SOLUTIONS

# The New Normal

## WHY FLUSH USING 9L OF WATER WHEN YOU CAN FLUSH WITH 2L?

DESIGNED TO EFFICIENTLY AND EFFECTIVELY FLUSH THE TOILET USING AS  
LITTLE AS 2L OF GREY WATER OR POTABLE WATER

ceramic  
unit

POUR FLUSH  
OR CONVENTIONAL  
FLUSH WITH LEAK FREE  
CISTERN USING LESS  
THAN 2L OF  
WATER PER FLUSH

polymer  
unit

**17 MILLION HOUSEHOLDS IN SOUTH  
AFRICA WOULD RESULT IN A  
SAVING OF 2.4 BILLION  
LITRES OF WATER  
EVERY DAY !**



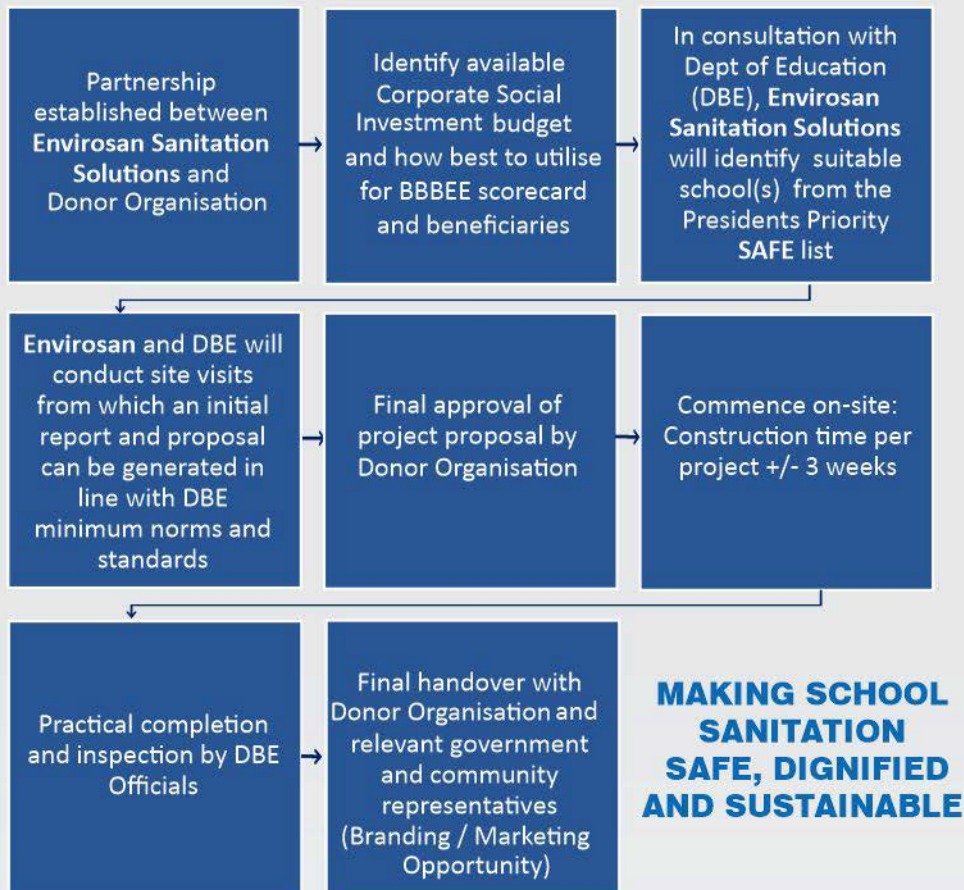
PROUDLY MADE  
IN SOUTH AFRICA



THE EVOLUTION OF THE TOILET



# SCHOOL SANITATION IN PARTNERSHIP WITH PRIVATE SECTOR DONORS



# SCHOOL SANITATION

Several private sector organizations have recognized the benefits (both in terms of cost effectiveness, delivery efficiency and improved BBBEE rating) of channelling a portion of their annual ESD and/or SED budgets through Envirosan to **provide safe and dignified sanitation facilities at over 200+ schools throughout the country**, where previously the scholars had no access to such a basic human right as safe and dignified sanitation.





## CHILD-SEAT LID

### ONE LID FOR CHILDREN & ADULTS

The Child-Seat Lid acts as a one piece lid for the normal, adult sized seat, with the Child-Seat incorporated into the lid. Precision Injection Moulded from a specially engineered grade of Polypropylene, the seat is smooth, non-stick and totally non-absorbent.

The product is designed to replace our existing flat lid, on either the 200 or 480 model pedestal, it only takes seconds to change the seat configuration.



### EASY-OPEN FOR CHILDREN

Clips into the existing seat. The Child-Seat Lid has clips to keep it securely in place. The front of the Child-Seat Lid has lifting openings to allow for children to easily lift the lid of the Child-Seat.



The clips keep the child seat down; ensuring children only open the lid to the child seat, and not lift the entire lid to expose the pit below.



### DURABLE DESIGN

Envirosan designs around product use - by using product specific material. In this case, both the hinge pins holding the Child-Seat Lid together and in place are made from Nylon and are virtually indestructible. This added durability ensures the product remains in use for the intended time period.



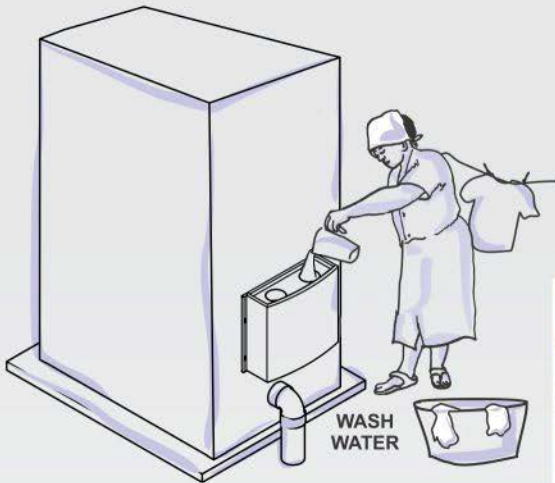
# 60L DEMAND-FLUSH TANK

The demand-flush tank can hold 60L of water. The tank can be manually filled with potable, rain, river or grey water as a flushing medium. It is fitted with a basic filter to prevent any large particles blocking the flush tank when manually filled.

The tank can be upgraded to accommodate a float valve to automatically shut once filled via a piped water connection. The simple self-closing, flush-on-demand system is manually operated by a pull mechanism on the inside of the toilet to only flush as much water as required to clean the bowl of the low-flush pedestal / Squat pan.



ONLY  
REQUIRES  
2L OF WATER  
TO FLUSH





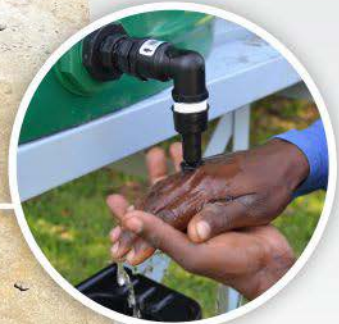
# EAZIWASH

2700L EAZIWASH WATER TANK FITTED WITH 4 x WATER OUTLETS  
AND 2 x SOAP DISPENSING UNITS



The EaziWash comprises a 2700L Water Tank with 4 x Water outlets, each more than 1m apart, fitted with a self-closing and self-cleaning EaziTap to dispense the minimum water required to effectively wash your hands without touching the tap with your open hand

The EaziWash is also pre-fitted with 2 x XOPi soap dispensing units



# EAZISPLIT<sup>TM</sup>

## POUR FLUSH OR CONVENTIONAL LOW FLUSH APPLICATION USING 1-2L OF WATER TO FLUSH



### *Technology category*

Hybrid Pour / Low Flush Urine Diversion Sanitation Solution for Peri-Urban and Urban Settlements

### *Input*

Pour Flush or Conventional Low Flush Application using 1-2L of water to flush.



### *Partners Involved:*



### *Technology category*

On-Site and Off-Site Sanitation options

### *Output*

The Eazisplit has been designed to be compatible with a range of rural “back end” solutions, including a leach pit, septic tank, conservancy tank, biodigester, solids-free sewer system or similar on-site / off-grid treatment facility, without any adverse effects on the surrounding soil conditions. The Urine can further be treated / collected for alternative use or disposal



## VIP 200 PEDESTAL

The VIP 200 is a uniquely designed polymer injection moulded VIP pedestal designed with an integrated seat and lid arrangement.

The VIP 200 is the smoothest product on the market, which promotes cleaning and ultimately improves community health. The pedestal is supplied complete with a lockable flange that can be cast into the concrete slab or placed directly on top.



UPGRADEABLE TO:

## FLUSHING UD 200

The flushing UD 200 is the next step in the sanitation ladder with the VIP 200 which can easily be upgraded by simply inserting the urine diversion insert. The 10L hand wash reservoir with its hand washing basin can then be connected into the UD 200 inlet with the wash water sufficient to flush out the urine bowl within the UD 200 insert. This is to allow for both the urine as well as the wash water to be drained into a constructed soak away. With the urine and wash water re-directed away from the faecal chamber, the system has an increased lifespan without any bad odours.



UPGRADEABLE TO:

**The First Fully Upgradable  
Pedestal from VIP to Flush!**

## EAZIFLUSH™

Revolutionising the way we use flushing toilets, the Eaziflush™ requires only 2 litres of water per flush. It is the last step in line of upgradable pedestals from VIP to UD to Flushing, meaning we can convert existing VIP and UD application to full flush without having to install a whole new pedestal. It is also able to be used as a pour flush unit when piped water is not available to the household. The unit can connect into any back end system ranging from leach pit to sewer network.



## VIP 480 PEDESTAL

The VIP 480 is a polymer injection moulded pedestal complete with an integrated seating design, eliminating possible damages and ensure effective long term use

The VIP 480 includes an integrated flange which fits into a cast-in support ring, this reduces any risk of movement of the pedestal allowing safe use at all times

As a result of the polymer injection moulded process, the product has an extremely smooth finish for ease of cleansing and very low manufacturing variances.



UPGRADEABLE TO:

## UD 480 PEDESTAL

A urine diversion insert bowl and internal components are added to the standard VIP 480 pedestal to upgrade the unit to a fully functional UD 480. The UD 480 includes an integrated flange which fits into a cast-in support ring, this reduces any risk of movement of the pedestal allowing safe use at all times. This further assists with the moveability of the UD pedestal in double chamber systems.

The EnviroSan UD 480 is the most effective urine diversion pedestal on the market, splitting the urine at source better than any other UD system.



**AVAILABLE  
IN DIFFERENT  
COLOURS**





## 10L HAND WASHING UNIT

The injection moulded reservoir has a self-closing tip tap valve, it is made in a clear co-polymer to ensure that the water quality and level can at all times be monitored. It is fitted with a sliding lid that allows ease of access for filling. The reservoir is supplied in conjunction with a basin that is fitted with a stainless steel disc to prevent any solid material from being washed down the pipe. The basin is designed with a ribbed soap holder and incorporated peg to accommodate a face cloth or small towel.



## 5L HAND WASHING UNIT

The 5L hand wash is designed to be fitted on the outside of the super structure. The unit comprises of a top and bottom cap made from ABS that fit to a pre-specified size cut piece of 110mm PVC pipe. The bottom cap is designed to accept a self-closing tip tap valve and the top cap has been given a slight taper to ensure that it can be removed when filling is required but still remain firm regardless of what elements it may be exposed to.



## 2L HAND WASH BRACKET

The 2L hand wash bracket is made from a durable and robust co-polymer and has been designed to accept a standard 2L plastic bottle. The bottle is placed in the bracket with the top of the bottle facing down; the bottle is fitted with a self-closing tip tap valve. The bracket has a ribbed soap holder and incorporated peg to accommodate a face cloth or small towel. It is recommended that the 2L bracket be fitted on the outside of the super structure.



## XOPI SOAP DISPENSER

The XOPI is a soap dispenser that uses locally available bars of solid soap. The dispenser grates soap, much like a cheese grater, and releases fine grated soap flakes for easy use. The soap is safely locked in a sturdy and durable container with a key-less lock, which mitigates easy removal. The product's safety and durability is tested by the renowned certifying body TÜV.



## VIP FLY SCREEN

The VIP fly screen is designed with an incorporated screen to stop any flies from entering or exiting the VIP chambers, the fly screen is tapered with a push fit design, which does not require any glue to fix the unit onto the vent pipe.



## UD FLY SCREEN

The UD fly screen is designed with an incorporated screen to stop any flies from entering or exiting the UD chamber, the fly screen is fitted with a domed clear cover lid to restrict any rain water entering, but to still allow light through, with the flies attracted to light, the flies (if any) inside the UD chamber will move up into the vent pipe, towards the light where they will be trapped and subsequently die, the fly screen is tapered with a push fit design, which does not require any glue.



## VENT SOCKET

The vent socket is a virgin polymer injection moulded socket, designed to fit the 110mm vent pipe, the vent socket is cast into the concrete base slab with the vent pipe simply fitted into position. The internal collar of the vent socket prohibits the vent pipe from falling into the pit chamber.



## DOOR LATCH

The dual operation nylon latch is designed to operate with ease, never to rust or break as it is manufactured from virgin nylon, being amongst the strongest plastic materials on the market. The latch can open from the inside even if locked on the outside as a safety measure to users.





# ENVIRODOOR

THE REVOLUTIONARY NEW HIGH  
DENSITY COMPOSITE POLYMER DOOR !

BEWARE OF  
CHEAP  
IMITATIONS



## ADVANTAGES:

- Pivot hinged door (no conventional hinged mechanisms to mitigate the risk of any damage to either the door or the superstructure when exposed to strong wind.
- Translucent design to allow sufficient light into the unit.
- Smooth surface and easy to clean
- UV stabilized
- Stable and Sturdy Design
- Non-Corrosive material
- Lightweight construction
- Dual operation safety latch
- not susceptible to theft
- Non-Combustible
- Zero Maintenance
- Agreement Approved

# EAZISOAK<sup>TM</sup>

THE ALL-IN-ONE DIY DRAINAGE SOLUTION

## PRODUCT DETAILS & INSTALLATION GUIDELINE

### What is a Soakaway?

A Soakaway (also referred to as a French drain, leach/drain field, sub-soil drains or trench drain) is a trench conventionally filled with gravel or rock (or both) with a perforated pipe and covered in a geotextile material that redirects surface water and groundwater away from an area.

French drains are primarily used to prevent ground and surface water from penetrating or damaging building foundations and as an alternative to open ditches or storm sewers for streets and highways.

Soakaways may also be used to disperse liquid waste from a typical septic tank sewage treatment system. Soakaways are also used behind retaining walls to relieve ground water pressure.

**Conventional  
Soakaway**

**EaziSoak<sup>TM</sup>  
Soakaway**



**100L EaziSoak  
Chamber**

**50L EaziSoak  
End Cap**



### What is the EaziSoak<sup>TM</sup>

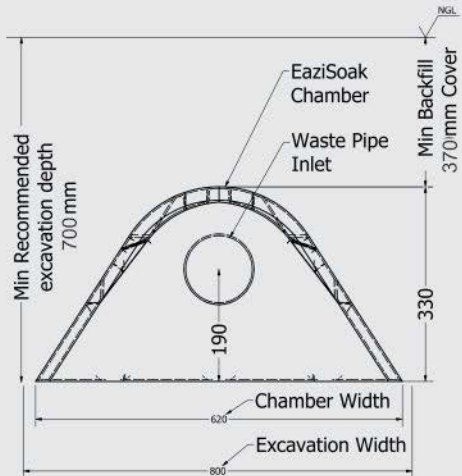
The EaziSoak<sup>TM</sup> is a modular, easy to install, plug-and-play soakaway system that replaces the conventional fabric, stone, and perforated pipe Soakaway, French drain, and leach/drain field application.

The EaziSoak<sup>TM</sup> is designed to generate a much larger percolation area compared to a conventional soakaway system, resulting in improved dispersion of the liquids over a smaller footprint whilst maintaining the required percolation capacity.



### What are the advantages of the EaziSoak™

- Smaller footprint (with improved performance)
- Improved percolation area compared to a conventional soak away allowing installation on sites with limited area availability.
- Modular installation allows fast and easy installation, contributing to direct cost and time savings on site.
- Greater storage capacity
- Bottom of chambers are completely open for unobstructed infiltration of liquids.
- Perforations included in the chamber design allow maximum liquid infiltration.
- Substitutes the use of stone, perforated pipe and geo-fabric which isn't always readily available.
- Completely stackable and easy to transport without the use of expensive construction equipment.



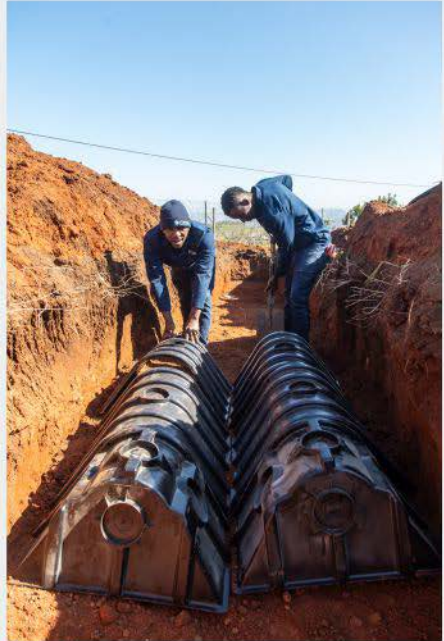
Typical installation

### SIZING GUIDELINE

Percolation rate: Ave. Time for a 25mm water level fall measured in Minutes  (Test hole 300mm diameter circle or square – min 300mm deep)	Septic Tank for 3 bedroom house with full pressure water connection (900L per day)		Septic Tank for 5 bedroom house with full pressure water connection (1400L per day)		Septic tank for low cost housing (76L per person per day @ 6 occupants (456L per day)	
	Trench Excavation 800mm wide x 700mm deep		Trench Excavation 800mm wide x 700mm deep		Trench Excavation 800mm wide x 700mm deep	
	No. Chambers	Trench Length metres	No. Chambers	Trench Length metres	No. Chambers	Trench Length metres
0-3min	10	7,00	16	10,72	5	3,90
3-5min	10	7,00	16	10,72	5	3,90
6-10min	12	8,24	18	11,96	6	4,52
11-15min	16	10,72	22	14,44	7	5,14
16-20min	20	13,20	30	19,40	7	5,14
21-26min	24	15,68	40	25,60	8	5,76
27-30min	32	20,64	50	31,80	9	6,38
Over 30min	NOT RECOMMENDED					

### INSTALLATION

- Set out the the area for trenching – excavation width of 800mm and the estimated length according to table 1 above
- Exavate the trenches to a depth of not less than 700mm deep
- Remove any large stones from the bottom of the trench
- Rake the bottom of the trench and ensure that the trench is level / slightly sloping downwards.
- Place the inlet end-cap first and cut out the required inlet position where the waste pipe will be connected to the end-cap (designed to fit a standard 110mm or 50mm waste pipe)





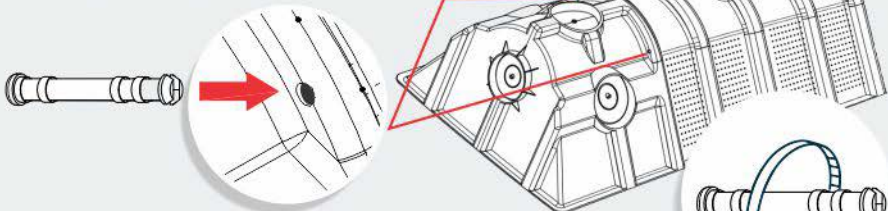
# EAZISOAK<sup>TM</sup>

THE ALL-IN-ONE DIY DRAINAGE SOLUTION

## INSTALLATION

cut out the required inlet position

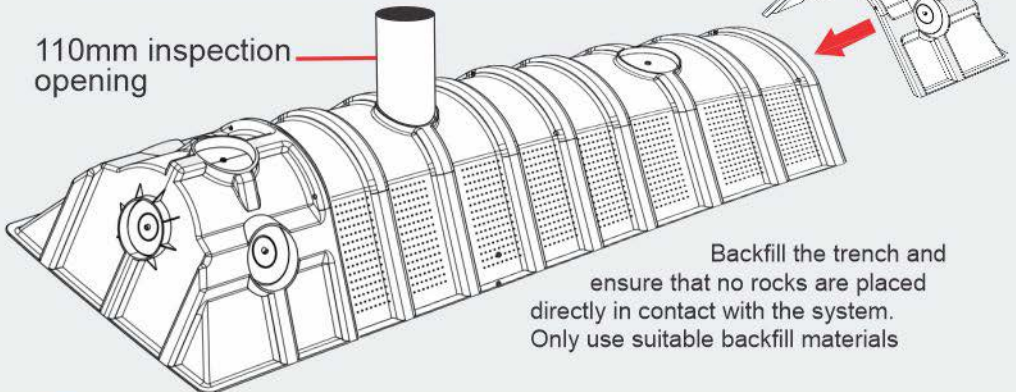
- Place the chamber and connect the end-cap to the chamber by using the pin provided.



- Thread the cable tie through the appropriate hole in the connection pin and pull tight to secure the connection between the chambers and/or end-cap
- Carry on connecting all required chambers in the same manner as per above and ensure that they are all level or have the prescribed downward slope
- Once all chambers are installed and connected, place the final end-cap in position and connect (Do not cut out any of the 110mm openings if no pipework will be connected)
- Where required, cut out the 110mm inspection opening in the top section of one of the chambers and install a 110mm waste pipe with end cap as an inspection / maintenance point

110mm inspection opening

end-cap



Backfill the trench and ensure that no rocks are placed directly in contact with the system. Only use suitable backfill materials

# SYSTEMS

VENTILATED IMPROVED  
PIT (VIP) TOILET



EAZIFLUSH  
POUR FLUSH

VIP WITH URINE  
DIVERSION



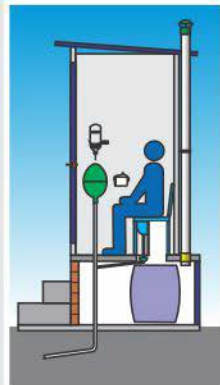
EAZIFLUSH  
LOW FLUSH

DOUBLE CHAMBER  
URINE DIVERSION



EAZISPLIT: POUR FLUSH

URINE DIVERSION  
WITH REMOVABLE BIN



EAZISPLIT: LOW FLUSH



Compatible with  
numerous  
back-end solutions



Compatible with  
numerous  
back-end solutions



Compatible with  
numerous  
back-end solutions



Compatible with  
numerous  
back-end solutions

## Head Office: South Africa, Durban

15 Hillclimb Road

Westmead

Pinetown, KwaZulu-Natal

Tel: +27 31 700 1866

E-mail: [info@envirosan.co.za](mailto:info@envirosan.co.za)

## Gauteng Branch:

Cell: +27 79 797 9705

E-mail: [ivory@envirosan.co.za](mailto:ivory@envirosan.co.za)

## Western Cape Branch:

Cell: +27 82 787 2112

E-mail: [jacques@envirosan.co.za](mailto:jacques@envirosan.co.za)

## Zimbabwe:

Cell: +263 7 72803990

E-mail: [edwin@santintoncon.co.zw](mailto:edwin@santintoncon.co.zw)

## Eswatini Branch

Cell: +268 7680 3944

+268 7962 6500

E-mail: [sikhumbuzo@envirosan.co.za](mailto:sikhumbuzo@envirosan.co.za)



Web: [www.envirosan.co.za](http://www.envirosan.co.za)



THE EVOLUTION OF THE TOILET