



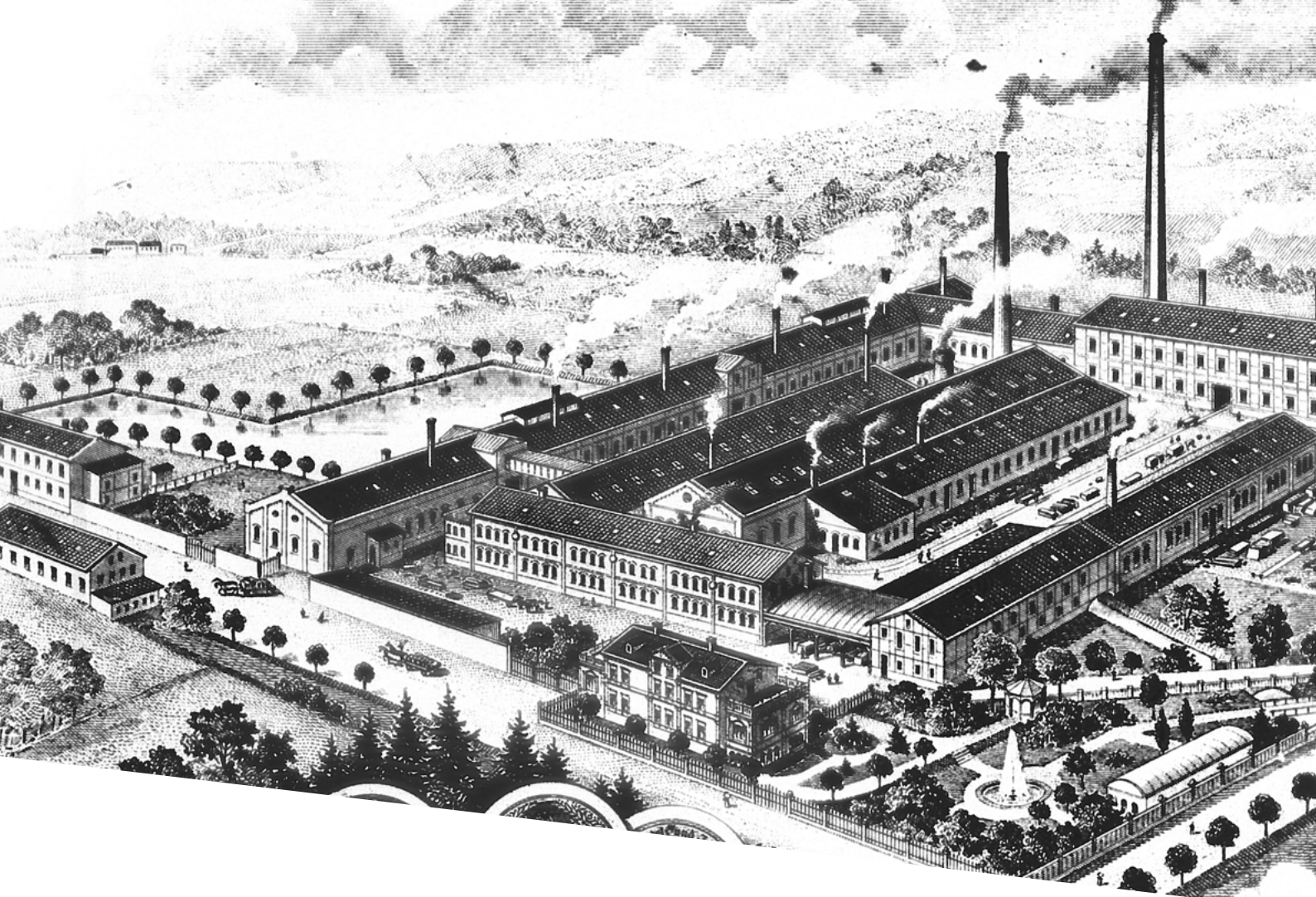
athmer.com

Innovative sealing solutions

EFFICIENT AND SAFE DOORS WITH ATHMER



athmer



The company Cronenberg celebrated its 300th birthday in 2011 and even to this day both tradition and innovation are equally important in terms of defining the corporate culture of the Julius Cronenberg Sophienhammer group of companies. Since the company's foundation in the year 1711 in Ennepetal, a small town in Germany named after the river Ennepe, a left tributary of the Volme in northern Sauerland, Germany, the company has embraced change and cultivated meaningful experiences to deliver value to the market place.

As the 5th generation entered, the business expanded and moved the company to Koerbecke, a town located in Germany, which is about 379kms west of Berlin, the country's capital. In 1870, Carl Julius Cronenberg acquired the Sophienhammer forge, located in the Roehr valley near Mueschede, from the Neu-Oeger smelting works in Hohenlimburg, which he later reconstructed and adapted the factory in line with his own manufacturing requirements.

Hermann Diedrich Piepenstock from Iserlohn was the original founder of the forge and the forge was named after his wife, Sophie. In the spring of 1871, Carl Julius Cronenberg put the scythe smithy into operations. The company Cronenberg had a compelling story of more than three centuries and is proud to be a family owned business operating globally.

True to the saying, 'coming together is the beginning, keeping together is progress and working together is success', in the year 1991 and 1998 Carl-Julius and Wilm-Hendric Cronenberg entered the company as the tenth

generation and continued to steer the group's strategic development. Driven by the entrepreneurial spirit of the founder, the company constantly pushes new boundaries and sets up new benchmarks.

Our roots remain an important element of our corporate culture. Therefore, we have not changed the historical part with its stories of legacies, factories, human, machines, tradition and innovations.

athmer is a deep-rooted establishment in Europe and a proud member of JCS group's legacy for more than 60 years. The trailblazing success story began in the year 1950, when the automatic door bottom seal Kältefeind® was registered as a brand. Ever since athmer's self-image has widened and the expertise in the field also have constantly expanded which established athmer to become Europe's leading manufacturer of automatic door seals. The company views itself as a pioneer of special sealing solutions in a wide range of 'competence all around the door'.

The core of our success is adherence to strict quality controls and continued improvements on our tried and trusted procedures together with our belief in fostering a culture of innovation and constantly upgrading the products to meet the needs of the market.

Armed with world-class globally approved products and with several investments around the world-subsidiary companies are formed in UK and several countries in Asia. athmer is expanding and offering solutions for every market.



**300 years of tradition -
the history of
Cronenberg Group JCS**



JCS Group

/ Mannus

- flagpoles, cordon systems and street furniture



/ Croso international GmbH

- glas balustrade, post balustrade and handrail systems
- Germany and Austria



/ Via Guide GmbH

- public guidance and information systems
- electronic queuing systems



/ Urbanus GmbH

- urban furniture



/ Ennepetaler Sensenwerke

- scythes





/ Sonnleithner GesmbH, Austria

- flagpoles, cordon systems and street furniture



/ Contipole ALU-Verarbeitungs GmbH, Austria

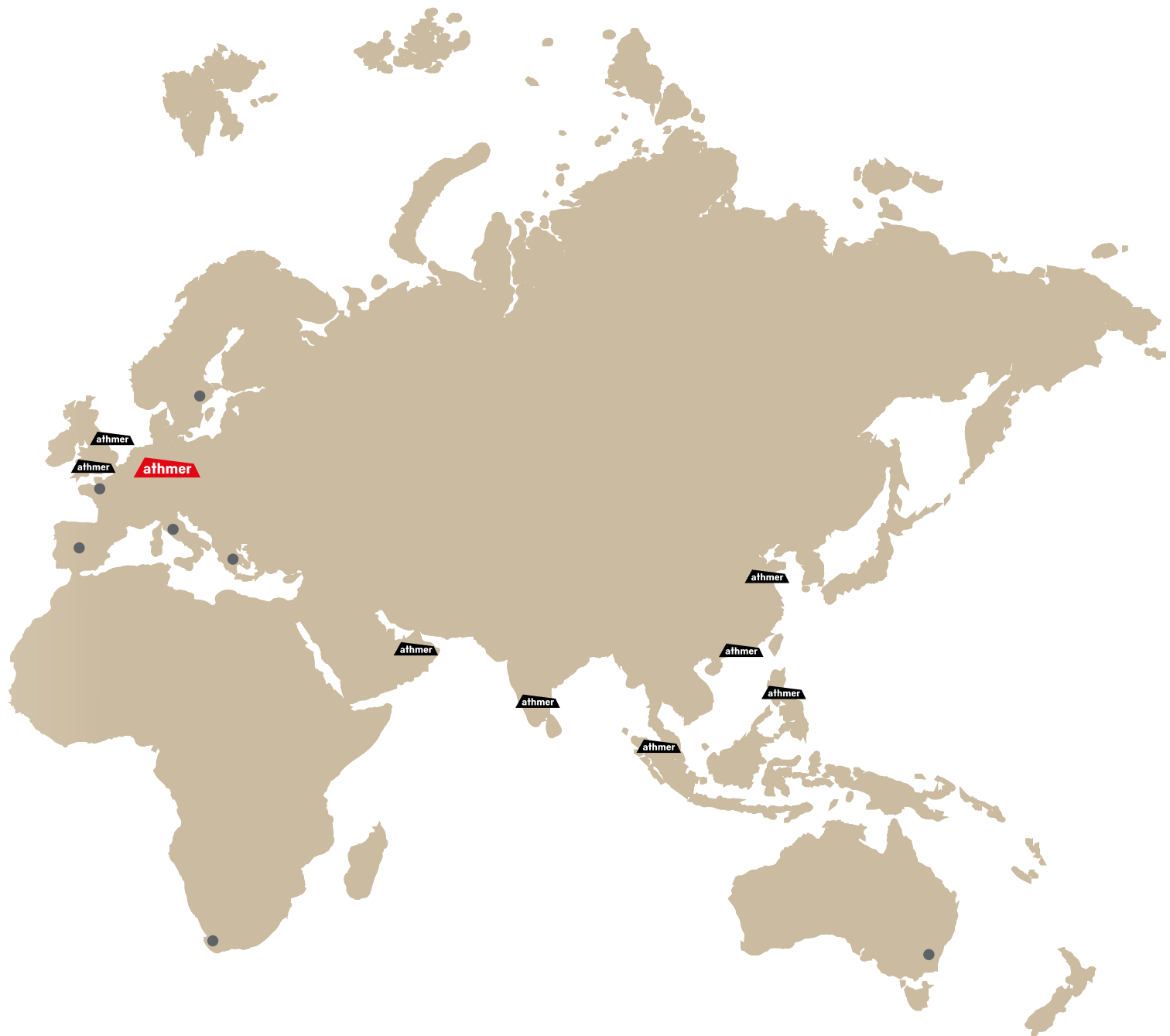
- Conical aluminium poles



/ Contipole ALU-Verarbeitungs GmbH, Austria

- Conical aluminium poles





athmer Group expands its business in Asia

After athmer first gained a foothold in the Asian market in 2015 with the incorporation of **Qingdao Sophiehammer Hardware Co., Ltd (QSH) in China**, the company continuously expanded its presence in the Middle and Far East in the years that followed. athmer established branches in no less than three growth centers on the Asian continent: in **Singapore**, **India** and **Dubai**.

The most important goal is to establish greater proximity to local customers. On the one hand, the establishment of the branches makes it possible to keep products in central warehouses or at regional distributors and thus make them available more quickly. On the other hand, Asian customers have personal contacts in their region, which simplifies and optimizes service and support. As athmer's expertise relates not only to drop seals but to the entire door system, local representatives can provide customers with individual and competent advice - for example with regard to specific standards and requirements. Customers can thus be sure of receiving the right product for their requirements.

ATHMER - A GROUP OF COMPANIES COMMITTED TO OFFER SOLUTIONS

Competence across the UK

With its commitment in the UK, athmer took another significant step towards internationalization in 2015: The acquisition of **Norseal Ltd.** enabled the exchange of know-how in the field of door seals for special technical doors, from which both companies benefit to this day.

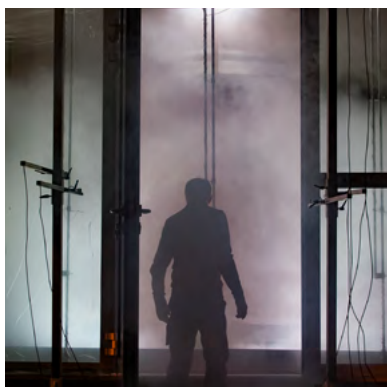
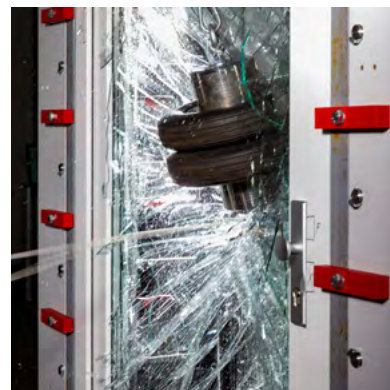
At the beginning of 2022, athmer also took over **Firestop Ltd.** in Dorchester. This enabled the medium-sized company to further differentiate its product portfolio, as Firestop has positioned itself not only as an expert for special door seals, but also for fire protection strips in doors. athmer now sells this additional fire protection solution to customers all over the world and can thus constantly expand its expertise and market position in the field of fire protection doors.

athmer technical centre

Sound, air/wind/water, burglary & hot smoke testing facility

Our state-of-the-art technical centre is, through continuous process optimization, equipped to carry out a number of tests. We test the sound insulation capacity of doors and windows and their resistance to air, driving rain and wind loads. As well as a world class hot smoke testing facility and we are proud to state that it is in association with ift-Germany, a renowned testing institute.

Athmer is Europe's leading manufacturer of automatic door seals and a reliable partner to our customers for more than 60 years. As a part of the legendary JCS group we are highly committed to quality and honour agreements with our customers. We support and offer counsel to our customers in the various stages of the product development with the aim of getting the product onto the market quickly, efficiently and with the highest quality standards.





athmer
technical
centre

athmer technical centre

development & innovation go together at athmer

We live in an interesting era shaped by constant demand and rapidly changing technology. The world of doors is constantly transforming and evolving. We at athmer are actively involved in adapting to this evolution. The culture of customer focus, adapting to new technologies, new requirements and creating new benchmarks is the driving force for the company's success.

athmer's commitment to providing world class quality products relies on its technical centre, where the highly trained technicians and engineers of the development team use latest technologies, always with the aim of further improving the quality of our door seals and finger protection systems.

More than 150 patents and registered designs worldwide clearly demonstrate our innovative ability. In order to further strengthen and add value to our customers, we collaborate with renowned test institutes and our engineers are proactively engaged in various committees of DIN standards. In this way, we are actively involved in establishing new standards in the world of doors.



Automatic drop seals

athmer manufactures a wide range of drop seal solutions according to the **international standards** and requirements for timber, metal, glass and PVC doors - hinged, sliding, pivot and double leaf. Most of our range has been **tested for one million cycles, UL and Certifire**.

athmer also offers retro fit drop seals for existing doors. Our customized solutions are made accordingly to the application and project requirements.

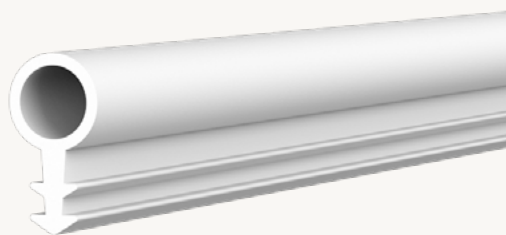
Our range is well-established in the industry following **decades of assured quality** and consistent innovation.

The seal drops automatically when the door is closed to form a seal with the floor, retracting when the door is opened to ensure the door operation is unhindered. This section contains options for use with both hinged and pivoted timber doors. Their main purpose is to provide an **effective barrier against sound** transfer at the door threshold, as well as smoke, air, light, dirt, dust, insects and odours. We have tested options for specialist applications including protection from radiation, corrosion and weather elements such as wind and driving rain.



See the
entire range
here!

**With the most
comprehensive range,
athmer covers almost
every application.**



Acoustic and smoke perimeter seals

Our range of perimeter seals has been curated to offer solutions for a **wide range of gap sizes, fixing locations and applications**. This includes rebated, self-adhesive and surface-mounted options for both door stops and frame reveals. Some seals act as compression seals, shaped so that they compress against the door when it is closed. Others perform as a sweep seal, sweeping against the door edge as the door moves into a closed position.

The athmer range includes seals that can be used at the head, jambs and the meeting stile of doors. There are solutions for hinged and sliding doors as well as for timber, metal and glass surfaces. Their main purpose is to provide an effective barrier against sound transfer between the door and door frame, as well as smoke, air, light, dirt, dust and odours. They can also effectively muffle door closing noise. They are the perfect accompaniment to our range of drop seals and an **essential component in an acoustic door assembly** targeting acoustic performance.



Intumescent fire seals

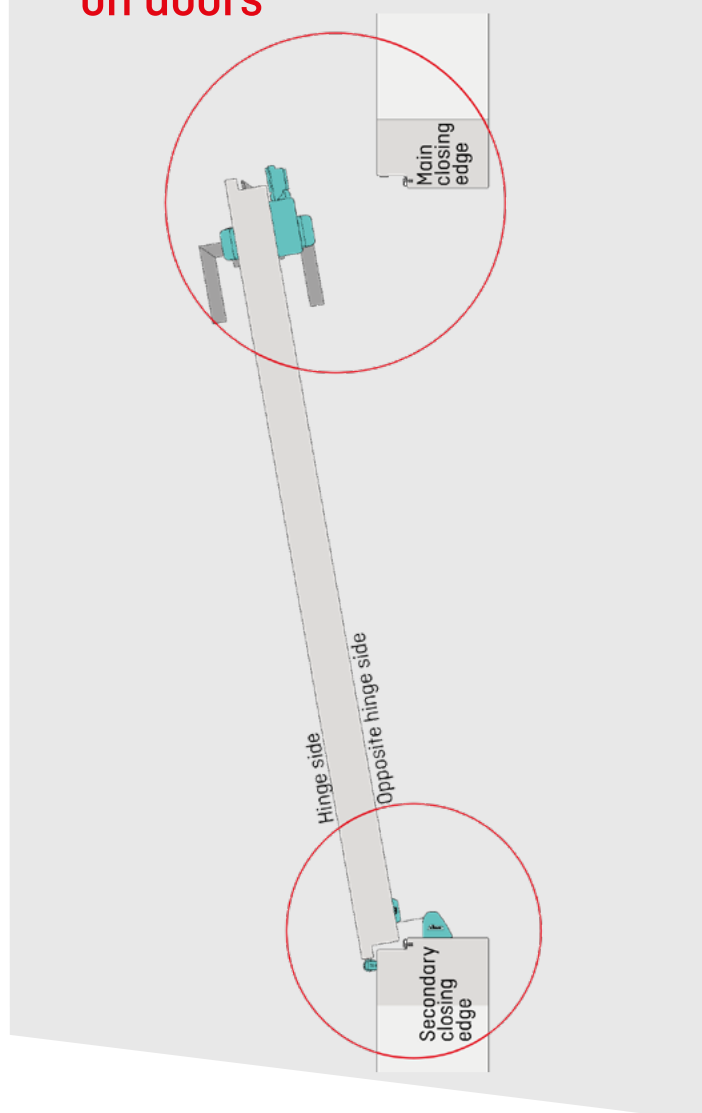
Our range of intumescent fire seals is suitable for use in a variety of [fire door applications](#). Fire doors help protect lives and property by slowing the spread of fire throughout a building. Intumescent fire seals are a key component in fire doors, used to protect the gaps between the door and frame as well as encasing certain door hardware. Intumescent fire seals help resist fire by expanding during fire conditions to fill gaps and provide a degree of insulation.

The range consists of several intumescent materials including graphite-based, silicate-based and phosphate-based solutions depending on your technical preference. As well as a choice of material, our products can be chosen with or without a protective PVC casing. Our encased intumescent fire seals can be supplied with integrated brushes and fins for additional [smoke and acoustic protection](#). Thinner, more flexible intumescent options are available if required.



ATHMER FINGERSCHUTZ® MAKES DOORS SAFER

Securing all danger points on doors



Tried and tested for years - thanks to their quality and durability athmer finger protection roller blinds were the first products on the market to **effectively secure** the gap on the opposite hinge side of doors against fingers being trapped. Since then, planners and fabricators have deliberately opted for athmer finger protection roller blinds because they **ensure safety** not only in kindergartens, schools, hospitals and care facilities. In addition, finger protection roller blinds offer superior protection against residual risks on **automatic doors**.

These solutions are available for timber, metal and glass doors and provide both visual and physical barriers to the gaps around a door. We offer **options** for both the opening and closing face as well as at the head with our Porti® range of door opening restrictors.

Headquarter, Germany
athmer oHG
Sophienhammer
+49 2932 477 500

info@athmer.com

Middle East, Dubai, UAE
athmer Middle East BMT LLC
+971 4 346 3800

dubai@athmer.com

South Asia, Pune, India
Athmer South Asia Pvt Ltd
+91 9962 5072 72

sa@athmer.com

Southeast Asia, Singapore
Athmer Southeast Asia Pte. Ltd.
+65 9838 3252

sea@athmer.com

Asia, Qingdao, China
Qingdao Sophienhammer Hardware Co., Ltd.
+86 532 8098 1098

info@athmer.cn



Follow us on WeChat



athmer